



PARKING FOR CLIENTS/FAMILIES VISITING 100 CONSILIUM PLACE

When parking at 100 Consilium Place, clients/families are encouraged to park in the underground parking lot. Please note that there is a small secondary parking lot on the ground level, near the front entrance to the building. However, the parking rates at this lot are significantly more expensive when compared to the underground parking lot.

Instructions for Parking:

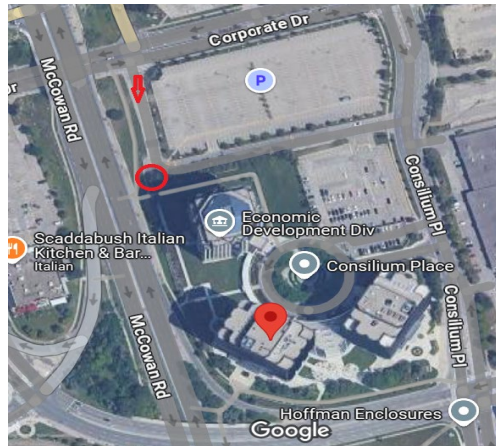
- The entrance to the underground parking lot can be accessed from either Consilium Place and/or Corporate Drive (see image below).
- When entering the underground parking lot, you will need to obtain a parking ticket from the machine when you enter the garage.
- Before you leave the garage, you will need to pay for your parking at one of the pay stations which are located on the main floor next to the parking lot elevators; alternatively, you can pay for your parking at the exit lane when you leave the building.

Free Parking for Stays that are Less than 15 Minutes:

In some cases, a family member may need to park for a short period of time to drop off a child/youth or to pick up a child/youth who has finished their visit at Strides Toronto. If you park for less than 15 minutes in the underground garage, then the parking will be free.

- When entering the underground garage, you will need to obtain a ticket from the machine.
- When leaving the garage, you should insert your ticket into the machine at the exit lane as you leave the garage. Parking will be free if you have parked less than 15 minutes. If your stay exceeds 15 minutes, however, then you will need to pay accordingly.

Figure 1- Entrance from Corporate Dr.



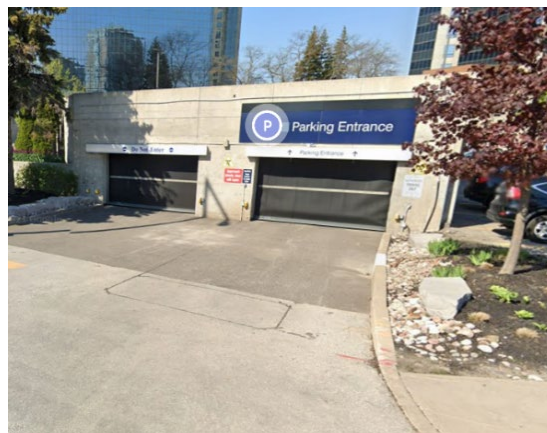
There are two ways to access the lobby of the 100 Consilium Place from the very large underground parking lot:

- **ROUTE #1:** You can park near the underground entrance to 100 Consilium Place which allows you to enter directly into the lobby of 100 Consilium Place via an elevator. **Please see the purple line on that attached map.**
- **ROUTE #2:** You can park near the entrance to 300 Consilium Place and then walk to 100 Consilium Place via a covered, above-ground walkway. (This route requires a longer walk to get to Strides Toronto but, if you are parking during regular business hours, it may actually be a bit quicker because there are usually plenty of available parking spots directly adjacent to the elevator/stairs that lead to the ground floor lobby.) **Please see the orange line on the attached map.**

ROUTE #1 – PARKING NEAR THE ENTRANCE TO 100 CONSILIUM PLACE:

- ✓ Enter from Corporate Drive (300 Consilium Place) (see Figure 2)

Figure 2



- ✓ Remain on Level P1 and continue to drive straight until you see the sign for 100 Consilium Place. (see Figure 3)

Figure 3



- ✓ Park in the lanes closest to the elevator; identified by a green dot on the parking garage map
- ✓ Take the parking lot elevator to the ground/main floor.
- ✓ Exit the elevators and turn left towards the elevators and building lobby
- ✓ Select the 6th floor on the elevator panel.
- ✓ Exit on the 6th floor and check in at Strides reception

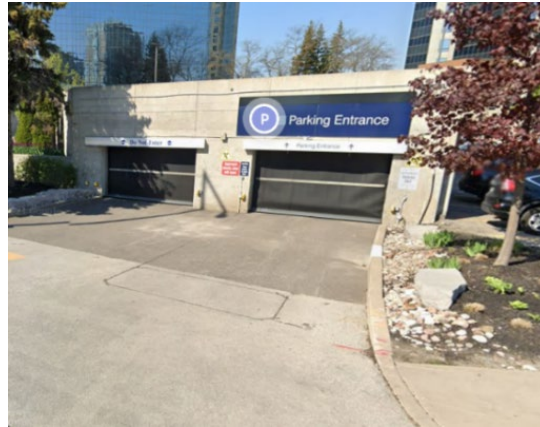
Returning to your vehicle

- ✓ Follow the same route in reverse.
- ✓ Go to the parking elevators when you arrive on the ground/main floor of 100 Consilium Place and take them down to parking level P1.
- ✓ Insert your parking ticket in the pay machine (across from parking elevators) or at the exit lane (see instructions at the end of this guide)
- ✓ See Map of P1 Parking Lot for reference

ROUTE #2 – PARKING NEAR THE ENTRANCE TO 300 CONSILIUM PLACE:

- ✓ Enter using the underground parking lot entrance from Corporate Drive. (see Figure 4)

Figure 4



- ✓ When you enter the garage, take the first left and park in one of the spaces in that immediate area. You are in Level P1 of the underground garage.
- ✓ Take the parking elevator to the ground/main floor of 300 Consilium Place
- ✓ Walk towards the lobby and turn right to take the walkway to 100 Consilium Place (see Figure 5)

Figure 5



- ✓ Enter 100 Consilium Place and turn right towards the elevator (see Figure 6 and Figure 7)

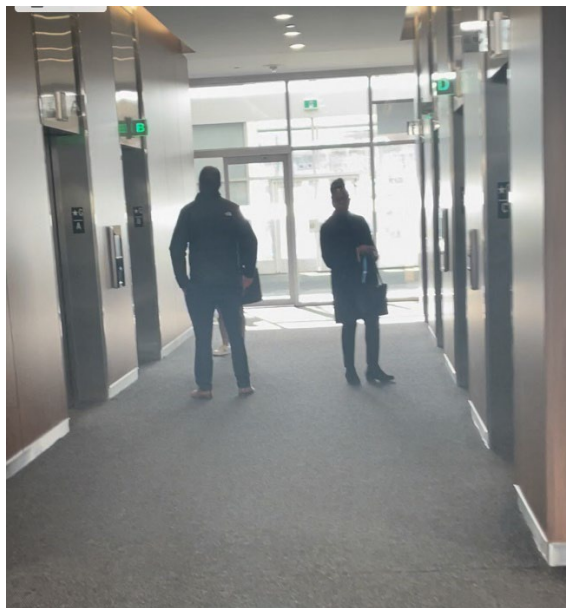
Figure 6



Figure 7



- ✓ Select 6th floor on the elevator panel



- ✓ Exit on the 6th floor and check in at Strides reception

Returning to your vehicle

- ✓ Follow the same route in reverse.
- ✓ Go to the parking elevators when you arrive at 300 Consilium Place and take them down to parking level P1.
- ✓ Insert your parking ticket in the pay machine (across from parking elevators) or at the exit lane (see instructions at the end of this guide)

See Map of P1 Parking Lot for reference

Using Entry Ticket Pay Machine or at Exit Lane Pay Machines

- ✓ Insert the entry ticket in the ticket slot at the pay machine across from the parking lot elevators or at the exit lane machine.
- ✓ Remove the entry ticket once you see the parking fee on the machine display screen.
- ✓ If the amount is cleared by the entry ticket, there is no need to make any payment, and you may proceed to your vehicle.
- ✓ If you are inserting your ticket at the exit lane and the amount is cleared by the entry ticket the parking gate arm will open.
- ✓ If you are inserting your ticket at the pay machine and there is an additional amount to pay, make the payment and proceed to your vehicle.

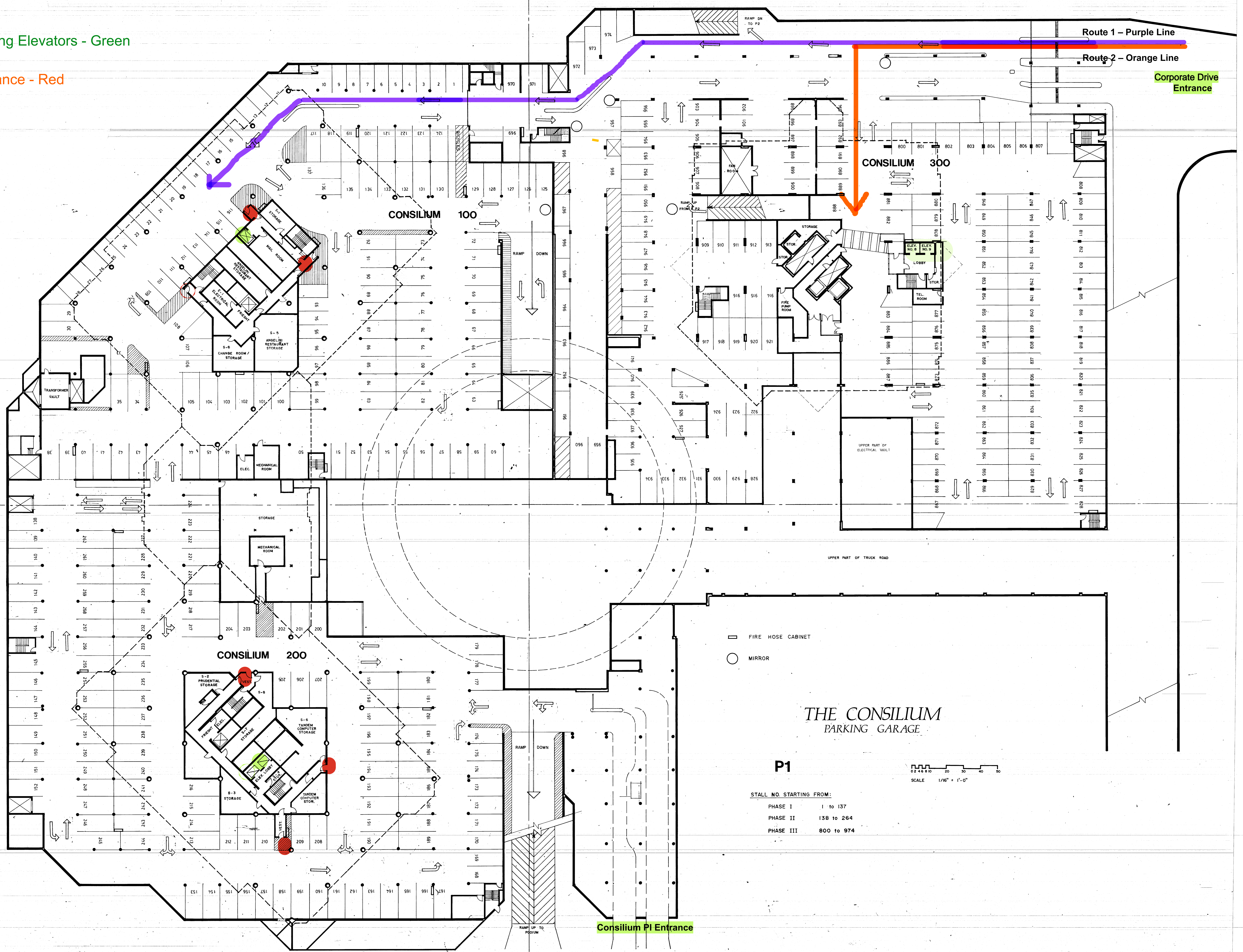
Parking Elevators - Green

Entrance - Red

Route 1 - Purple Line

Route 2 - Orange Line

Corporate Drive Entrance



THE CONSILIUM PARKING GARAGE

P1

PHASE	STALL NO. STARTING FROM:
PHASE I	1 to 137
PHASE II	138 to 264
PHASE III	800 to 974

SCALE 1/16" = 1'-0"

Consilium P1 Entrance